

5007

RACING SHARP KIT

- Ergonomic side edge sharpener
- Easy handling, steady grip, maximum accuracy
- Best results, minimum effort
- Right and left hand use
- For ski and snowboard



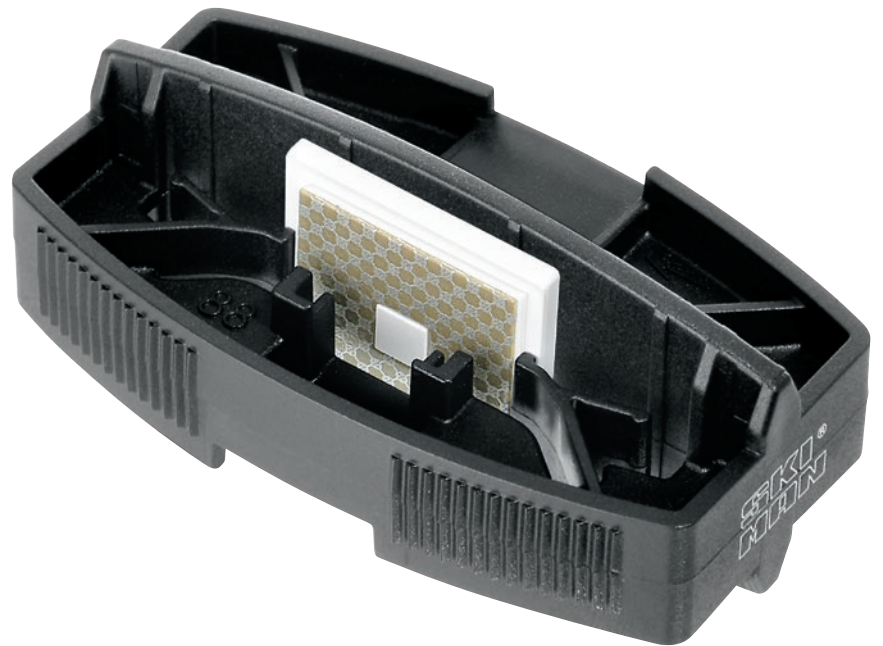
comes with High Quality **icecut** SWISS MADE 80 mm file

side edge
89°/88°
87°/86°

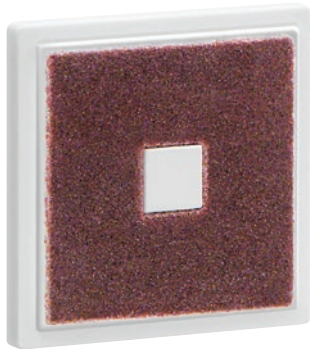
base edge
0.5°/1°

SPORT ACTIVE

RACING TEAM



side + base tuning



STEP 1 ZIRCONIUM:
to remove rock damaged spots and burrs before using the file.
(Spare part **5140**)

STEP 2 FILE:
to sharp and set up the side edge angle.
(Spare part **5104**)



STEP 3 DIAMOND:
to polish and super finish the ski and snowboard edges.
Best if used with water or with a polishing solution.
(Spare part **5160**)

